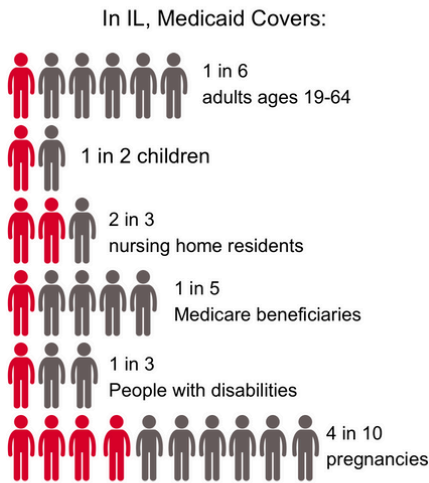


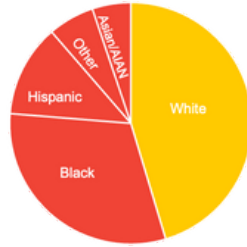
PROTECTING MEDICAID PROTECTS ILLINOIS

Medicaid is the largest source of federal funds into Illinois. This safety net helps people live healthier and more economically-secure lives. **If federal Medicaid funds are reduced or capped, taxpayers will have to make up the missing amounts or essential services will be cut - for all.**

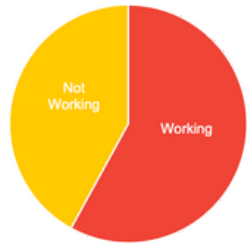
What does Medicaid coverage look like?



62% of non-elderly Medicaid enrollees in IL are people of color



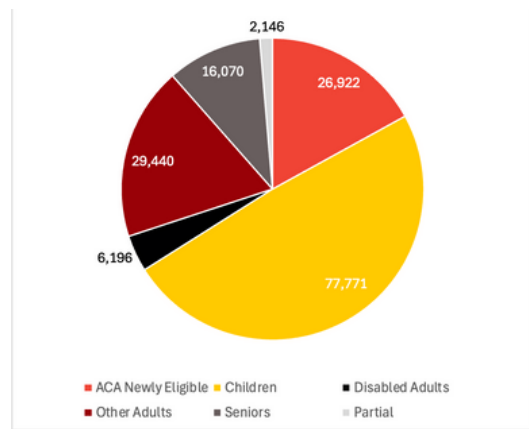
58% of adults in IL on Medicaid are working



Who does Medicaid cover?

3.4M Illinoisans are enrolled in Medicaid-158,545 in CD 08

Medicaid enrollment by category - CD08

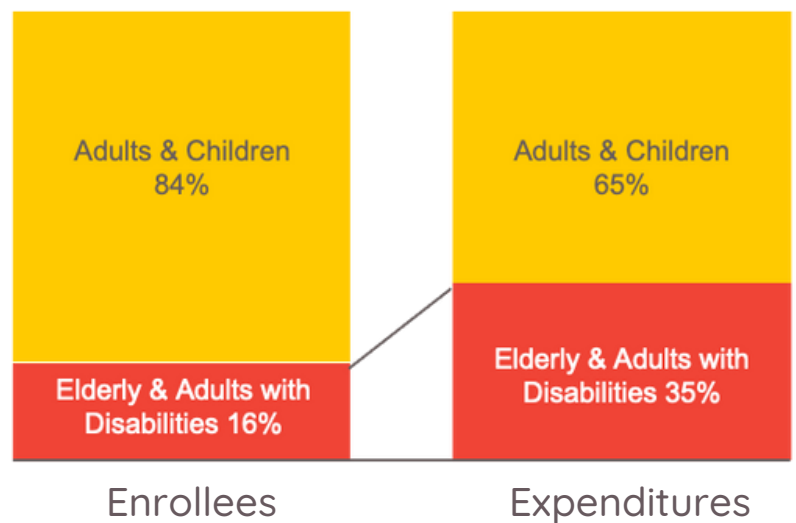


In FY23, IL received \$21B in federal funds for Medicaid--65% of total funding for Illinois Medicaid

Medicaid expansion alone brought \$8.7B to IL (compared to \$1.8B in state spending)

Reducing the Medicaid expansion match to the regular rate would increase state costs by \$2.3B; a 386% increase in state costs.

IL Medicaid Enrollees & Expenditures



For more information, please contact:
Kathy Waligora, EverThrive Illinois,
kwaligora@everthriveil.org